



CLIVEPEARCE
Now you're moving

5 Bedrooms

House - End Terrace

Guide Price

£625,000

Located in

Truro



www.clivepearceproperty.com



Parkins Terrace

Truro | | TR1 1EJ



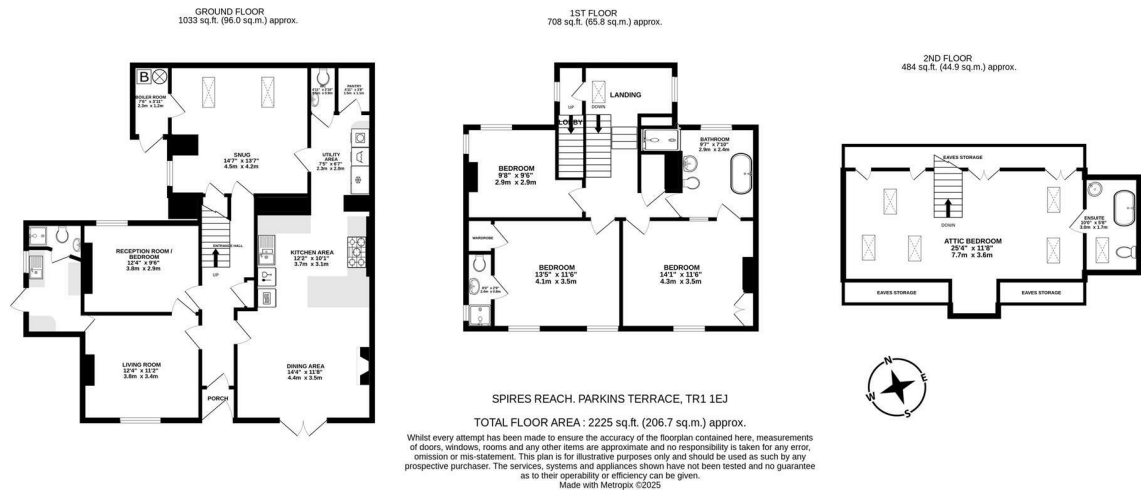
A quite unique and exceptionally spacious 5 bedroom (3 en-suite) end of terrace character townhouse with breathtaking views of Truro Cathedral, sunny garden and off street parking.

Parkins Terrace

£625,000 Freehold



- Flexible 5 bedroom townhouse
- Sunny front garden & nearby off 'off-lead' dog walks
- Comprehensively & sympathetically renovated in 2017/2018
- Four bath / shower rooms (3 en-suite)
- Two allocated off street parking spaces (999 yr lease from 2017)
- Exceptional close up Cathedral views
- A wealth of period detail intact & ample storage
- Potential for integral 'granny flat' / Airbnb
- Vacant possession / NO ONWARD CHAIN
- Workshop, store shed, garden office & covered entertaining space



Council Tax Band E

Local Authority

Agents Note: Whilst every care has been taken to prepare these particulars, they are for guidance purposes only. All measurements are approximate and are for general guidance purposes only and whilst every care has been taken to ensure their accuracy, they should not be relied upon and potential buyers/tenants are advised to recheck the measurements.

Energy Efficiency Rating		
	Current	Potential
Very energy efficient - lower running costs		
(92 plus) A		
(81-91) B		
(69-80) C		
(55-68) D		
(39-54) E		
(21-38) F		
(1-20) G		
Not energy efficient - higher running costs		
England & Wales	EU Directive 2002/91/EC	

31 Lemon Street
Truro
Cornwall
TR1 2LS



CLIVEPEARCE
Now you're moving

hello@clivepearceproperty.com

01872 272622

www.clivepearceproperty.com